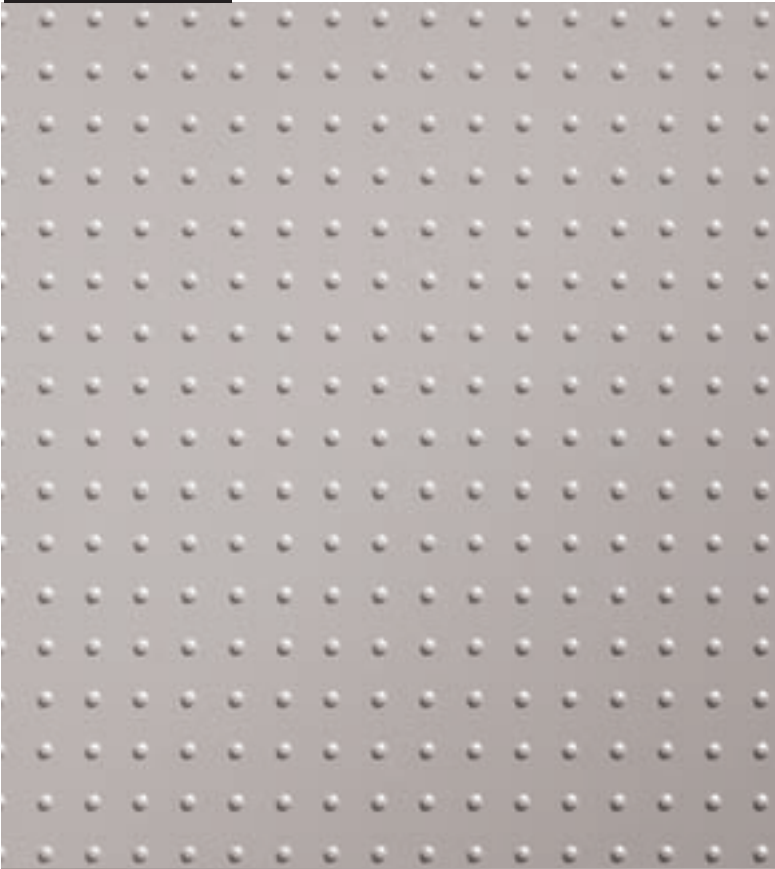




**Matrix™** Panel System

Full Frame, Stackable, Tile Panel System

WHERE  
YOUR  
OFFICE  
BEGINS.<sup>SM</sup>





# **AIS Matrix™** IS A FULL FRAME, STACKABLE, TILE PANEL SYSTEM

designed to meet the most  
challenging as well as the most  
basic workspace requirements.


AIS Matrix™ bridges the gap  
between Aesthetics, Design, Value  
and Quality. AIS Matrix lays to rest  
the misconception that Tile Systems  
should cost more than traditional  
Monolithic Panel Systems.

Enjoy discovering how AIS Matrix  
will transform your thinking about  
your workspace.





CONSIDER THE POSSIBILITIES.



REDEFINE THE WORKSPACE.



# TODAY'S WORKSPACES ARE ABOUT CHANGE.

The ability to respond quickly to the changing needs of customers and employees is paramount for today's businesses.

AIS Matrix™ defines Flexibility.

Having the most panel heights, widths, stacking combinations and tile options translates into more solutions for your changing office needs.

Demand more from your office system.

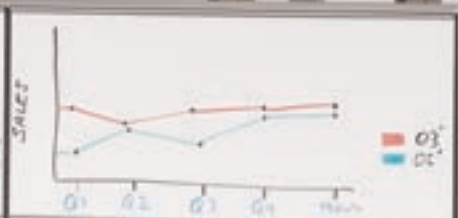


DEMAND MORE.  
GET **MORE.**



Never compromise when choosing a workstation intended to improve workers' environment and performance.





TEAM 1 ACTION INITIATIVES

- CUSTOMER VALUE SUPPORT
- IMPROVE TRAINING
- NEW PRODUCT TRAINING

TEAM 2 ACTION INITIATIVES

- RUN THE EXPERTISE
- IMPROVE/REORGANIZE SALES TEAMS
- HIGHER LEVEL SERVICE





# WHETHER PLANNING FOR A RECEPTION AREA

or conference area, the unique and simple design of AIS Matrix™ allows workspaces to be created efficiently and with purpose.

The AIS patented full-frame design and tile mounting system means fewer challenges and less downtime when confronting a new footprint or task requirement. Tiles are available in sizes from 8" to 82", and in eleven different styles.

# PREPARE FOR GROWTH.

Being flexible and responsive to changing demands both internally and externally is what differentiates successful companies from the rest. Prepare your workspace for change.









# DISCOVER LIMITLESS CAPABILITY WITH AIS MATRIX™.

Easy to specify and plan,

AIS Matrix™ includes one of the most versatile electrical, data and wire management systems available today. Wires can be run inside, on top, virtually anywhere in the panel frame – in other words, exactly where they are needed.

No matter the user demand, AIS Matrix complementing worksurface, component and storage options mean being able to create an environment that keeps up with with emerging function and space requirements.

# PUT YOUR IDEAS TO WORK.



From paper management to shared work surfaces and group task workstations, AIS Matrix™ offers extensive options that foster unlimited creativity and maximize function.







# WITH AIS MATRIX™, WORK TEAMS

and cross-functional employee spaces can be created to meet growing flex space requirements.

AIS Matrix™ offers a wide variety of work surface sizes and styles, including custom sizes so you achieve the “perfect fit” in any situation. With the most extensive standard fabric, laminate and paintfinish quickship available in the market today, style without compromise can be realized.

# EXCEPTIONAL QUALITY. ABSOLUTELY.

Quality and durability of a product matter.

Using 14 gauge steel full frame construction, and powder coat painted metal panel and tile trim, AIS Matrix™ defines rigid manufacturing standards of excellence.









# AIS MATRIX™ STRUCTURAL STACK-ON FRAMES

create private offices that can be tailored to various preferences and task requirements. Available in 8", 16", or 24" sizes and attachable to any AIS full frame panel, stack-on frames build a floor-to-ceiling wall, eliminating the need for traditional dry wall applications. Existing low panels can be extended to meet a new task requirement or to reconfigure. Various glass and other tile options allow for maximum design flexibility to complement the overall aesthetics of the environment.

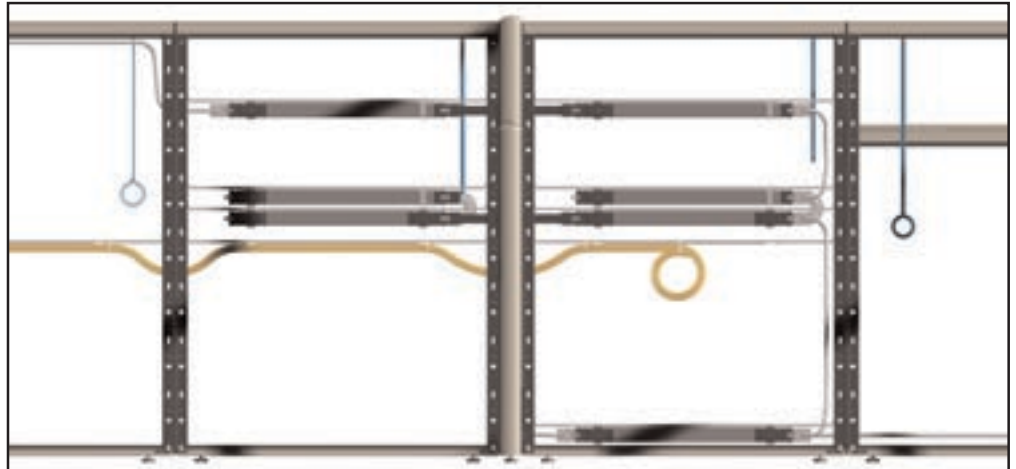
# WIRED FOR CURRENT AND FUTURE TECHNOLOGY.



Quad power tile above work surface height.

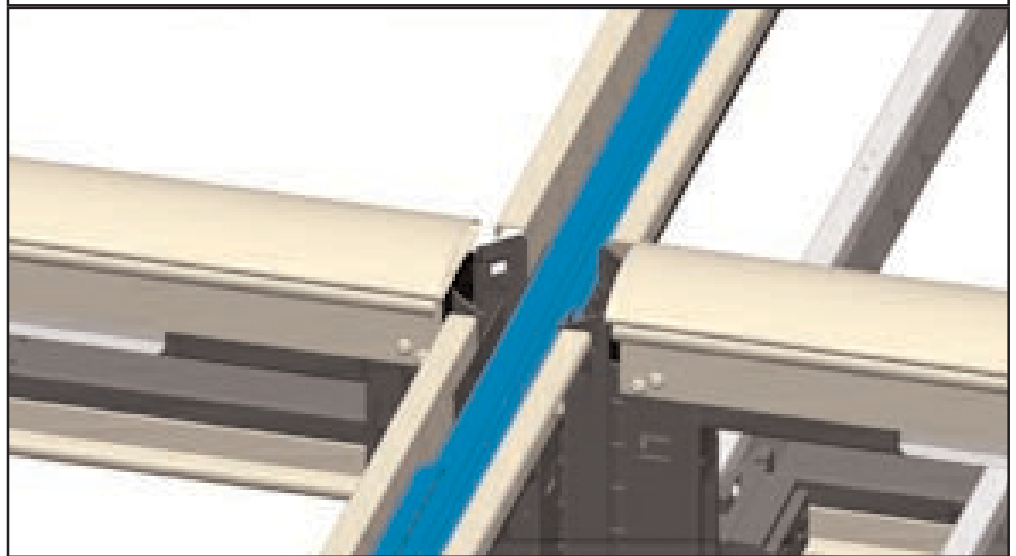
1

Powerways providing access to an 8 wire 4 circuit electrical system may be mounted at any height from base to beltline or above. Every 8-inch power access tile can accommodate two powerways stacked to allow access for up to 4 duplex outlets and/or data jack housings.



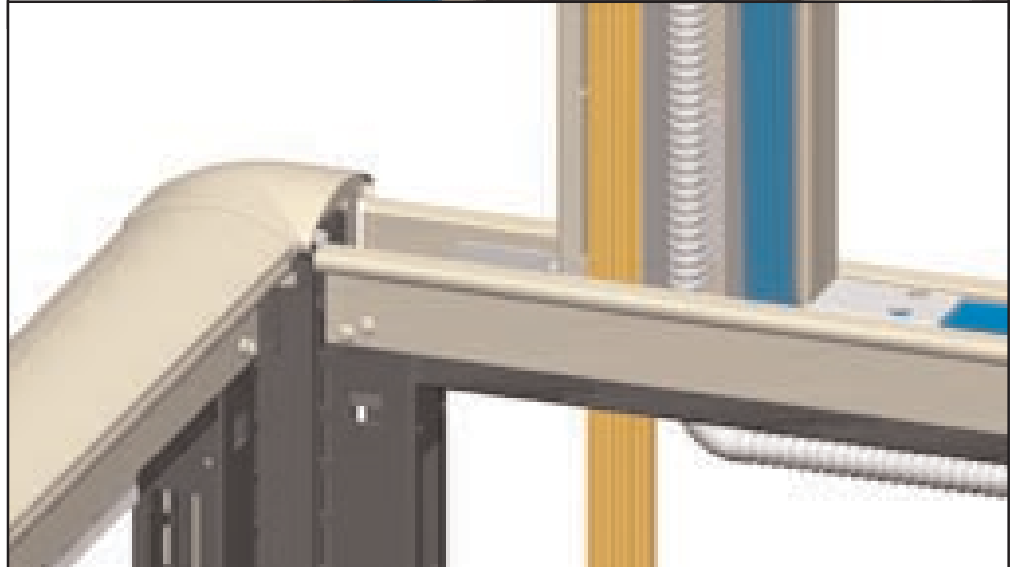
2

A true unimpeded "lay in" topcap channel accommodates up to 40 category 6 cables in addition to the 8" increment lateral channels. AIS Matrix™ sets a new industry standard for electrical and data capacity, flexibility and access.



3

A triple channel powerpole provides multiple power and data separation options.





Quad power and data combination tile above worksurface height.



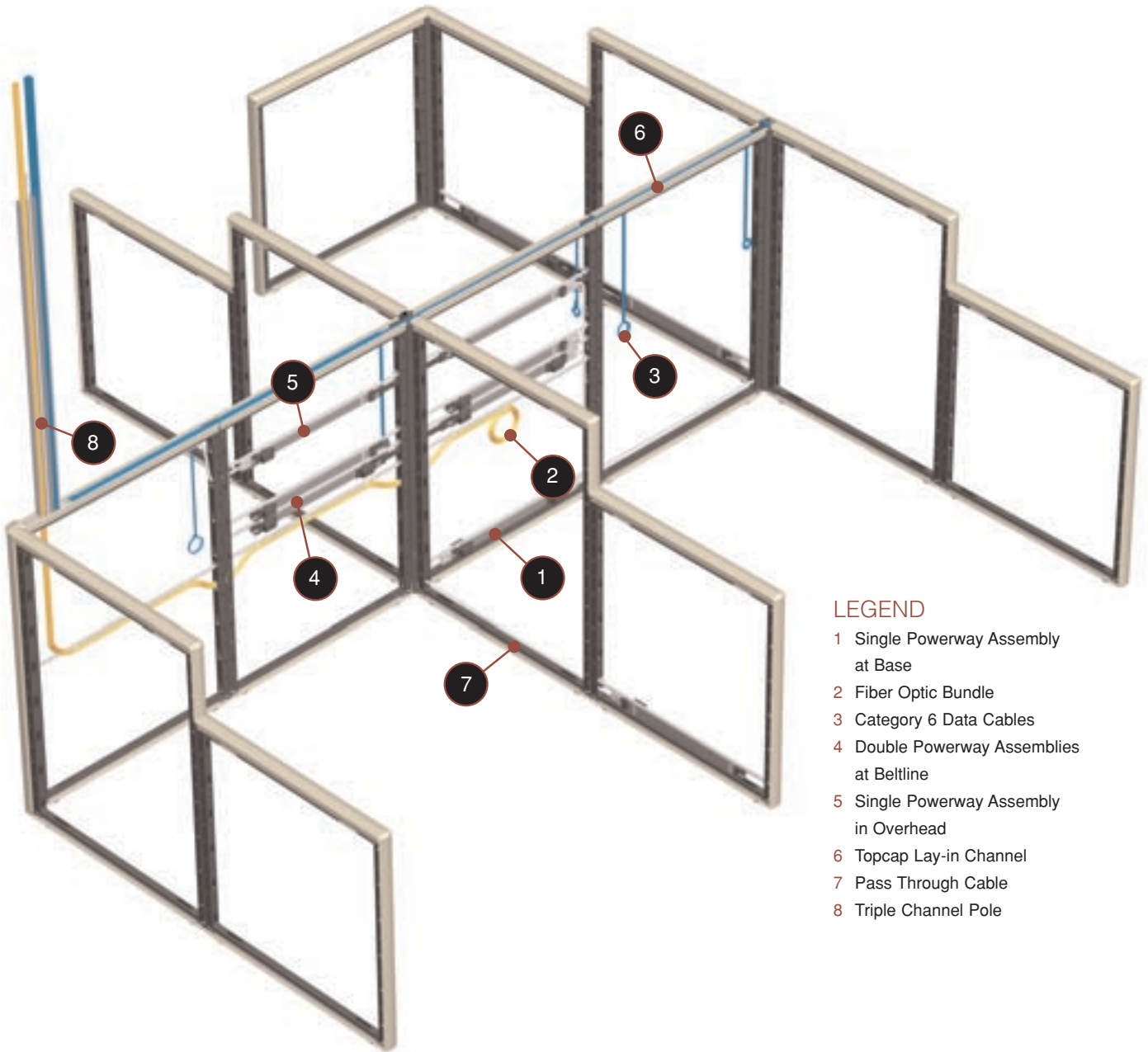
Quad power and data tile below the worksurface



Non powered steel tile at base raceway height



Dual power tile at raceway height



**LEGEND**

- 1 Single Powerway Assembly at Base
- 2 Fiber Optic Bundle
- 3 Category 6 Data Cables
- 4 Double Powerway Assemblies at Beltline
- 5 Single Powerway Assembly in Overhead
- 6 Topcap Lay-in Channel
- 7 Pass Through Cable
- 8 Triple Channel Pole

Combining extensive flexibility, capacity and simplicity with a modern, streamlined aesthetic, the AIS Matrix™ tile panel system provides an office furniture solution of unparalleled value.



**TACKABLE ACOUSTICAL FABRIC**  
 Heights: 8" - 82" in 8" increments  
 Widths: 24" - 48" in 6" increments



**GLASS OR ACRYLIC**  
 Heights: 16" and 24"  
 Widths: 24" - 48", in 6" increments



**PASS-THROUGH OPEN FRAME**  
 Heights: 16" and 24"  
 Widths: 24" - 48", in 6" increments



**PERFORATED "AIR-FLOW" STEEL**  
 Heights: 16" and 24"  
 Widths: 24" - 48", in 6" increments

## Versa-TILE™ OPTIONS.

Tackable/acoustical fabric tiles are available in heights of 8 to 82 inches, for a segmented or monolithic look. Other tiles are available in 8, 16 or 24 inch heights and painted steel, perforated (Airflow), embossed steel, laminate, whiteboard, open frame, electrical access and tempered glass with 2 different standard colors and patterns. Tiles are front mounting and may be individually removed without disturbing tiles above or below.



**SOLID STEEL**  
 Heights: 8", 16", and 24"  
 Widths: 24" - 48", in 6" increments



**EMBOSSED STEEL**  
 Heights: 16" and 24"  
 Widths: 24" - 48", in 6" increments



**WHITEBOARD**  
 Heights: 16" and 24"  
 Widths: 24" - 48", in 6" increments



**LAMINATE OR WOODGRAIN**  
 Heights: 8", 16", and 24"  
 Widths: 24" - 48", in 6" increments



**TOOL RAIL**  
 Heights: 8" and 16"  
 Widths: 24" - 48" in 6" increments



**QUAD POWER, DATA OR COMBINATION** Heights: 8"  
 Widths: 24" - 48" in 6" increments



**DUAL POWER, DATA OR COMBINATION** Heights: 8"  
 Widths: 24" - 48" in 6" increments



34"

42"

50"

58"

66"

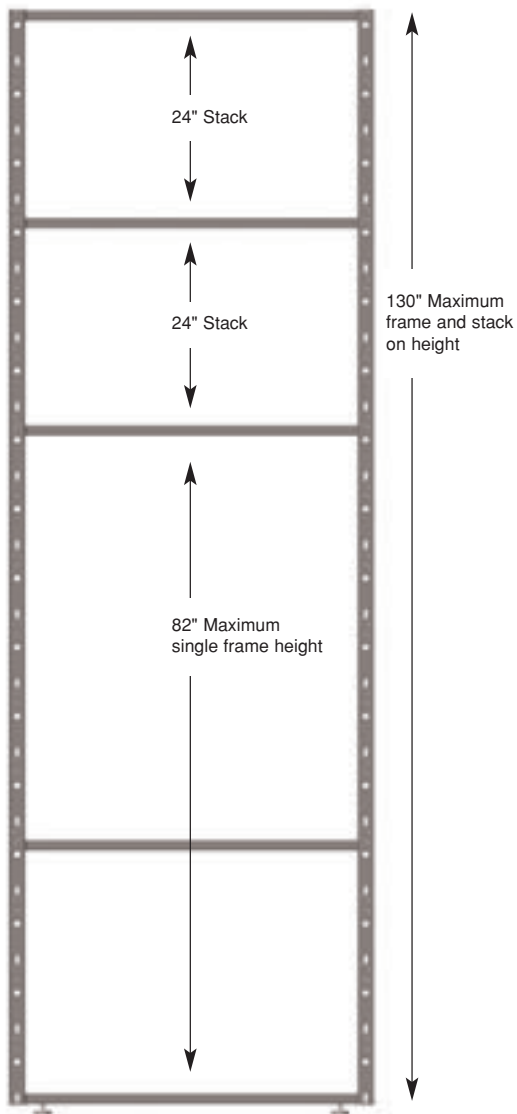
82"

## PANEL FRAME SIZES

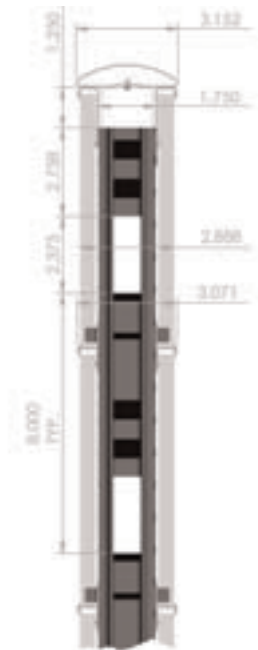
# FRAME AND TILE MADE EASY.

With six full-frame panel widths, from 24" to 48" wide, and six full-frame panel heights, from 34" to 82" high, and including 3 different structural stacking extensions and floor-to-ceiling components, AIS Matrix™ adapts to any office plan.

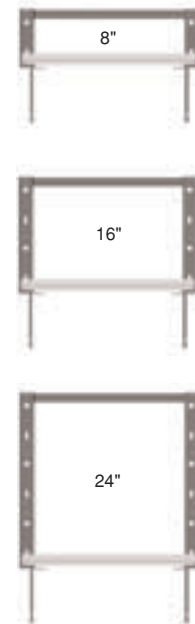
Roll formed steel frame construction imparts matchless rigidity and durability to the AIS Matrix system.



PATENTED CONNECTION AND TILE  
RETAINING SYSTEM



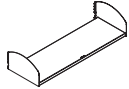
PANEL PROFILE



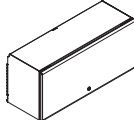
STACK ONS



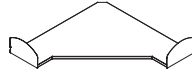
# COMPLEMENTING STORAGE AND FILE SOLUTIONS.



Mid Height Shelf Unit



Flipper Door Unit



Mid Height Corner Shelf

## SHELVES



Structural File/File 24"



Structural Box/Box/File 24"



Structural File/File 30"



Structural Box/Box/File 30"



Mobile Box File



Mobile Cushion Pedestal Seat

## PEDESTALS



Bookcase



2-door Storage Cabinet



2-drawer Lateral File



3-drawer Lateral File



4-drawer Lateral File



5-drawer Lateral File

## BOOKCASES, 2-DOOR CABINETS LATERAL FILES



50" Storage Tower Box/Box/File



50" Storage Tower File/File



62" Storage Tower Box/Box/File/File



62" Storage Tower File/File/File



62" Storage Tower File/File

## WARDROBE STORAGE TOWERS



- Heavy 14-gauge cold rolled steel frame and connectors
- All steel-to-steel connection points
- 20-gauge steel complementing pedestal and overhead storage
- Durable all metal powder coat painted panel and tile trim
- Structural stack-on frames
- Lifetime warranty

#### A DESIGNER'S DREAM

- Panel available in six (6) heights, and six (6) widths, with three (3) stack-on height options for a total available panel height of up to 130"
- Eleven (11) different tile options in a variety of heights and widths
- Thirteen (13) Standard worksurface widths, and three (3) depths, with custom sizes on standard lead time
- 4 Metallic and 5 Grade A Quick Ship paint finishes
- 30 Grade A Quick Ship laminates
- 120 Grade A Quick Ship fabrics, with over 400 fabrics finishes on standard lead time

# BUILT TO LAST.



#### READY FOR CURRENT AND FUTURE TECHNOLOGY

- Lateral electrical and data/phone cabling capacity
- 8 wire, 4 circuit power system and tiles can be mounted anywhere on panel frame
- Data/Phone Jack modules, in a variety of combinations can be mounted anywhere on panel frame
- Lay-in top channel capacity for 40 category 5 or category 6 cables
- Minimum cat 5 and cat 6 bend radius control at connection and pass-through points
- Entire panel UL Rated as a raceway for data and power



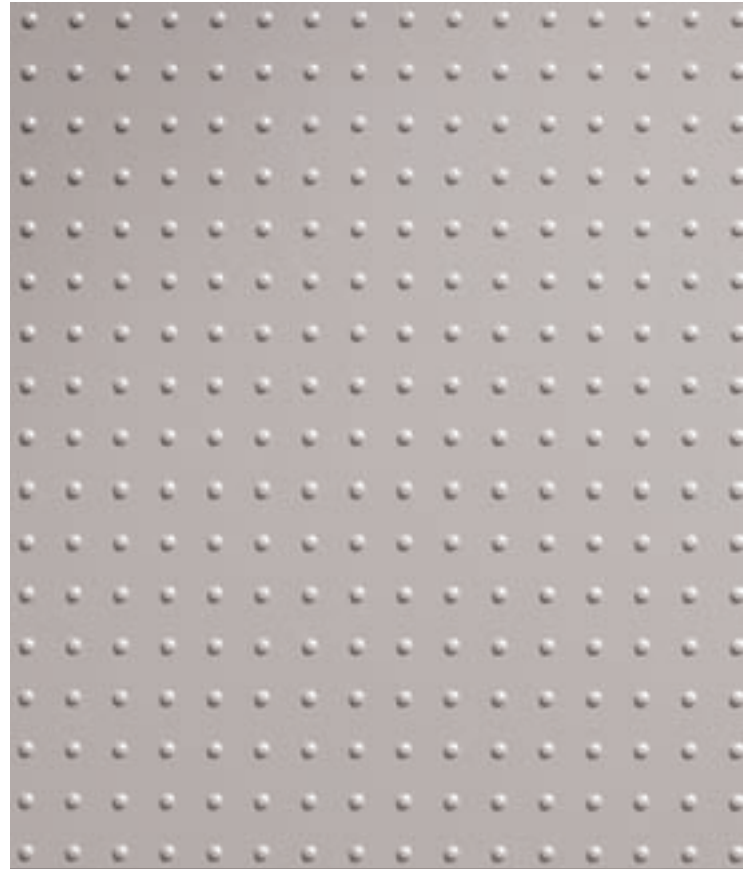
#### ENVIRONMENTALLY SENSITIVE MANUFACTURING

- Manufactured with stringent waste reduction and lean manufacturing practices, including extensive use of recycled material content, 100% paint powder recapture, excess fabric recycling, minimum energy consumption, automated manufacturing, and consolidated packaging system
- 76% raw material sources from non-virgin recycled materials
- 100% of product can be reconfigured and/or re-used in different workspace applications

For showroom locations, dealers, general information and more, visit [www.ais-inc.com](http://www.ais-inc.com).



4 Bonazzoli Avenue, Hudson, MA 01749  
Toll Free 800.434.7400 Outside the U.S. 978.562.7500  
FX 978.562.0811 Info@ais-inc.com



← GO BACK TO SEE YOUR NEXT OFFICE.



**GSA Evergreen Award**  
**GSA Small Business Designee**

Photography: Kaskons Studios, MA  
Matrix photos layout/colors: J.L. Georgiades  
Brochure Design: Hunsberger-Stap, MI  
Matrix Product Design: William Stewich

©2003, AIS. All rights reserved. AIS Matrix is a registered trademark of AIS, Hudson, MA.